



Intelligentcombination

... helps save room height

Combined supply and extraction air outlets

KWVB

SCHAKO
K L I M A - L U F T

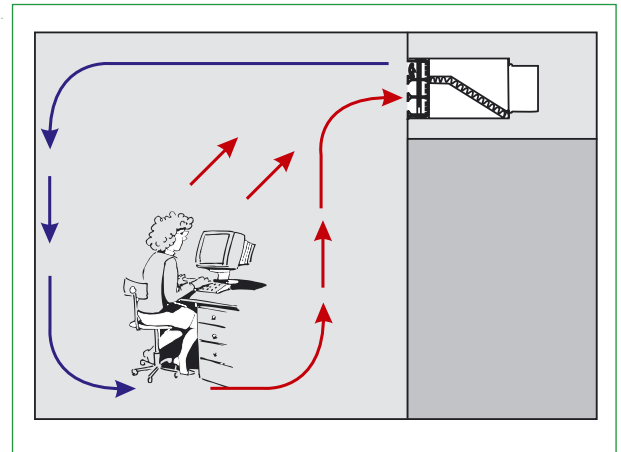
Combined supply and extraction air outlets KWVB

Offices are increasingly being fitted with air supply and extraction systems using a tangential air ducting system, in which combined supply and extraction air outlets KWVB are installed in the corridor wall. This offers a highly cost-effective alternative, as it does away with the need to install air ducts inside the office room itself. In addition, the installation of a drop ceiling is only required in the corridor, meaning that the room height overall can be lower.

Supply air is provided via outlet slits or nozzles at air emission speeds of 2 - 6 m/sec. This produces a highly stable current of supply air which is forced by the Coanda effect upwards towards the ceiling. A short circuit, i.e. direct extraction of the newly supplied air by the extraction opening is effectively prevented.

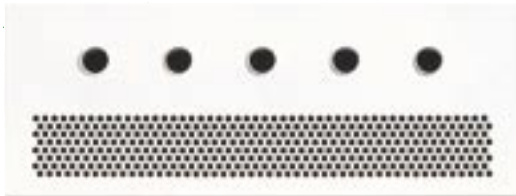
The supply air current achieves a projection length of up to 6 m, thus supplying the entire room with fresh air. The stable air current guidance permits a temperature differential of -8K between the supply and the existing room air. Due to its long projection length, the end speed of the air current and the temperature differential in the supply air are largely dissipated before the supply air drops into the manned area. Uncontrolled drop currents of the type which can occur when using wall-mounted swirl diffuser outlets are effectively prevented.

When using a combination of cooling ceilings or cooling panels KDE from Schako, the cooling output of the cooling elements is further enhanced by increased convection.

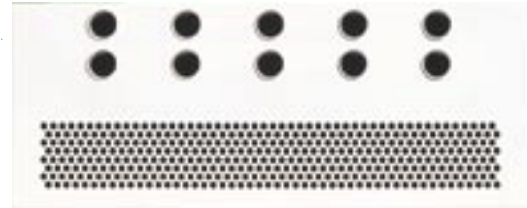


Combined suppl and extraction outlet KWVB-S in a smoke test
Length 1000 mm, $V_{\text{supply/extr.}} 100 \text{ m}^3/\text{h}$ $\Delta T = -6\text{K}$

The most versatile range of combined supply and extraction outlets offers outstanding scope for individual design!



KWB-D1



KWB-D2



KWB-AA



KWB-S



KWB-DSX



KWB-KL

In SCHAKO's high-performance air current testing laboratory, non-standard models can be tested and optimized in line with customer requirements.

This provides the necessary assurance of draft-free air guidance which still provides the entire room with an even supply of fresh air.

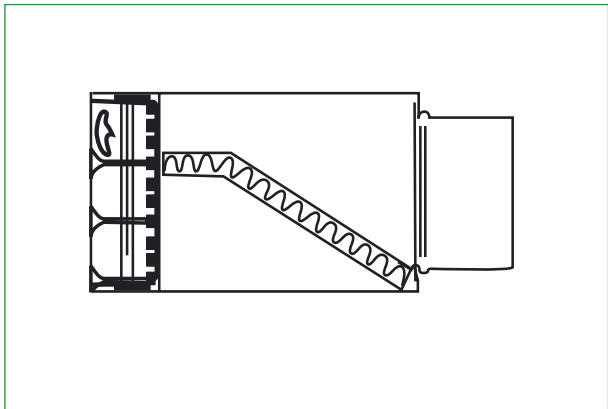
The prestigious Potsdamer Platz construction project in Berlin also provided prior verification of the technical data for special model KWB-AA.



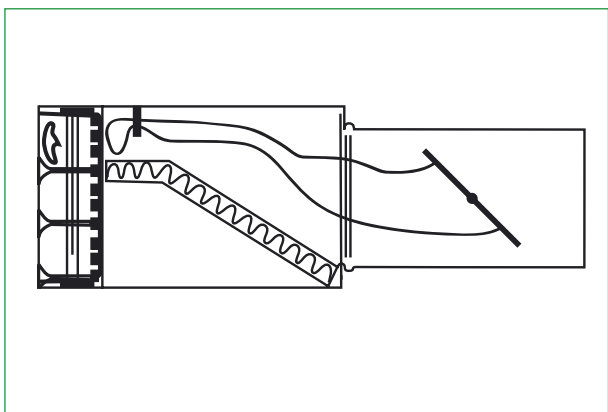
Do you have a special requirement?
Then simply get in touch with us, the specialists in air handling technology.

A wide range of accessories simplifies installation and enhances convenience

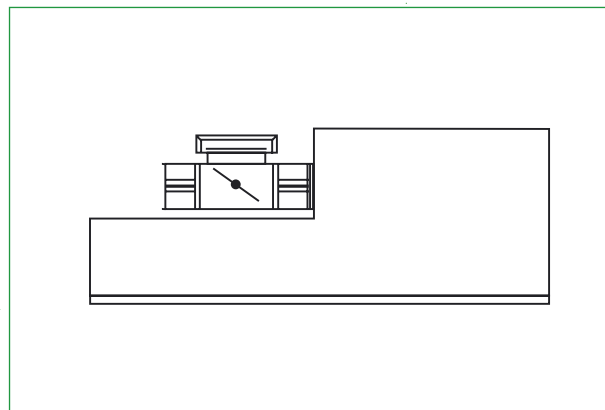
Energy is saved by the thermally isolated connection box which prevents premature air temperature exchange between supply and extracted air.



Special plenum box with adjustable perforated sheet damper for air volume control. The adjustment from inside the room is far easier and more time-saving than the conventional adjustment from the back of the plenum.



Special connection boxes with integrated mechanical volumetric flow controllers simplify system regulation and permit precise adjustment to required air volumetric flow levels.



Concealed installation of the outlets complies with the most stringent requirements in terms of styling and design. These outlets can be retrofitted. This prevents the grilles from being damaged when the units are removed at the end of their service life.

A clamping fixture system permits even faster and therefore more cost-effective mounting of outlets.

SCHAKO
K L I M A - L U F T

Ferdinand Schad KG · D-78600 Kolbingen

Telefon: 0 74 63 / 9 80-0 · Fax: 0 74 63 / 9 80-2 00 · E-mail: info@schako.de · <http://www.schako.de>